

Section	200	250	300	350	400
Kg / m	99.2	150.3	216.4	288.5	396.1
Nr of bars	4	6	8	12	16
Length m	Pile mass (t)				
3	0.3	0.5	0.7	0.9	1.2
4	0.4	0.7	0.9	1.2	1.6
5	0.5	0.8	1.1	1.5	2.0
6	0.6	0.9	1.3	1.8	2.4
7	0.7	1.1	1.5	2.1	2.8
8	0.8	1.2	1.8	2.3	3.2
9	0.9	1.4	2.0	2.6	3.6
10	1.0	1.5	2.2	2.9	4.0
11	1.1	1.7	2.4	3.2	4.4
12	1.2	1.8	2.6	3.5	4.8
13		2.0	2.8	3.8	5.2
14		2.1	3.1	4.1	5.6
15			3.3	4.4	6.1
16				4.7	6.5
17				5.0	6.9
18				5.3	7.3

Adjustment for main steel variance

Density kg/cu m		1m of 12mm dia = cu m	For each additional 12mm bar ADD kg /m
Concrete	2,400		
Steel	7,851	0.000113097	0.616493576

Prepared by	I White	Document Ref	Revision	Date	Page
Reviewed by	R Speakman	MSF-01-F16	1	04/03/16	2 of 4
IMS Approval by	R Speakman				

THREADING & PITCHING (getting the pile from horizontal to vertical for driving)

The pile should not be

- Pulled a greater distance than necessary
Potential risk to other people and traffic
- Pulled over rough ground or obstacles on the ground
Increases risk of damage.
- Hoisted using a single lifting eye; a reevable sling or other measure is advised.

Care must be taken to

- Maintain control of the pile at all times
Rapid movement may cause collision with rig resulting in damage and possible falling debris
- Review operational practices in high winds or restricted visibility.
- Secure the pile as soon as practicable in the driving helmet and with pile arms or similar.
- Keep the bottom of pile as close to ground as practicable at all times.

DRIVING

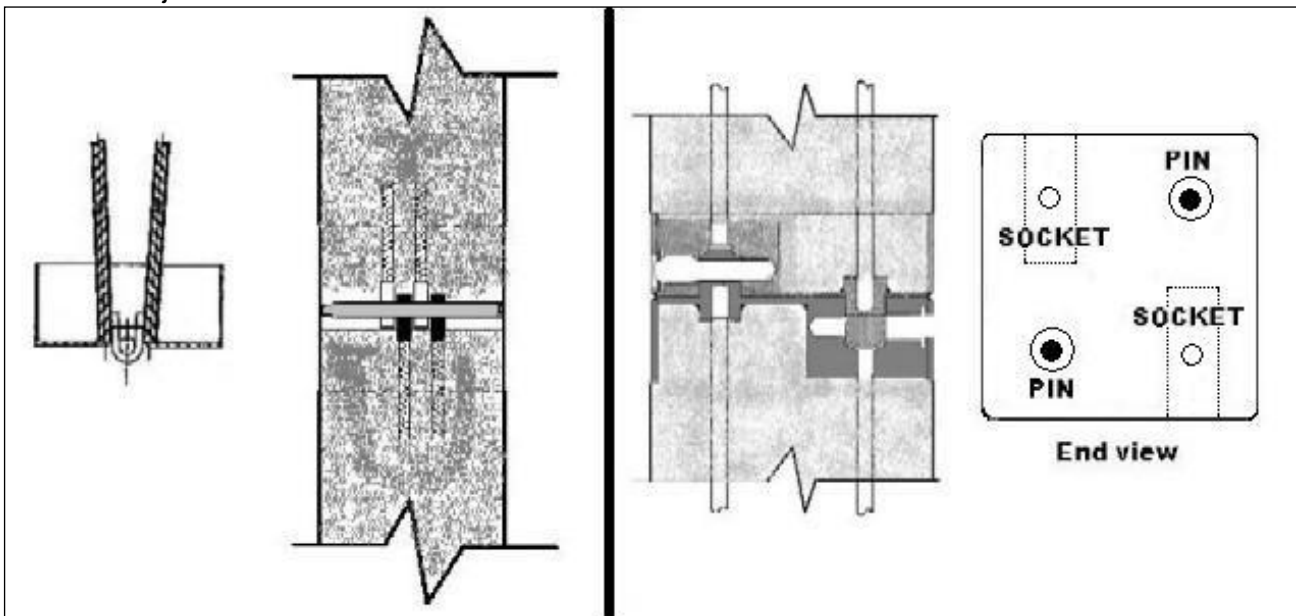
- Avoid forcing piles sideways (any direction) once they are firmly in the ground.
High risk of cracking the pile
- Regularly check alignment of hammer blow and pile shaft
Eccentric forces can break piles
- Check condition of helmet packing (under pack) at start of each pile, replace as required.

JOINTING PILE UNITS

Where longer piles are required units are supplied with a ½ joint.

It is essential to make sure that the pile unit to be added is of the same type and the right way round before threading & pitching.

Sketches of joints



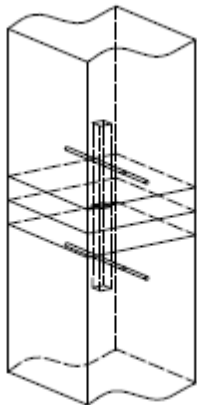
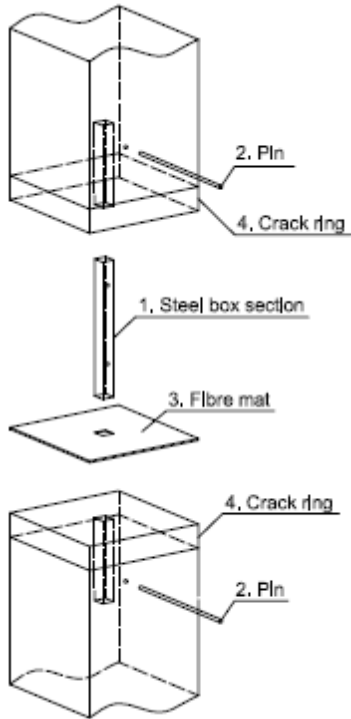
Align hoops & secure with single pin.

Secure with four pins when end plates flush.

JOINTING CD JOINTS

Prepared by	I White	Document Ref	Revision	Date	Page
Reviewed by	R Speakman	MSF-01-F16	1	04/03/16	3 of 4
IMS Approval by	R Speakman				

Line up under and over pile segments - insert common steelbox section into holes and fibre mat between the pile segments, place together and insert joint pins through under and over pile segments to secure.



Prepared by	I White	Document Ref	Revision	Date	Page
Reviewed by	R Speakman	MSF-01-F16	1	04/03/16	4 of 4
IMS Approval by	R Speakman				